

# STONEWOOD

BATH CABINETS



BUILT FOR YOU.™

by  ROCK SOLID™





# PURCHASE A VANITY AND STONEWOOD WILL PLANT A TREE!

Canada's forests span 347 million hectares, accounting for nearly 9% of the world's total forest cover. The country's incredible natural wealth includes boreal forest, the Pacific coastline, and great lakes. Stretching across northern Canada, from the Yukon to Newfoundland and Labrador, Canada's boreal zone is one of the world's largest intact forest and wetland ecosystems.

Trees clean our air and water, create habitats for biodiversity, and contribute to our health and wellbeing. That's why Stonewood is proud to partner with ONE TREE PLANTED as part of our commitment to sustainability.

For every vanity sold, we'll plant one tree. Together, we can help combat deforestation and restore wildlife habitats. For more information about ONE TREE PLANTED, visit: <https://onetreeplanted.org/products/canada>



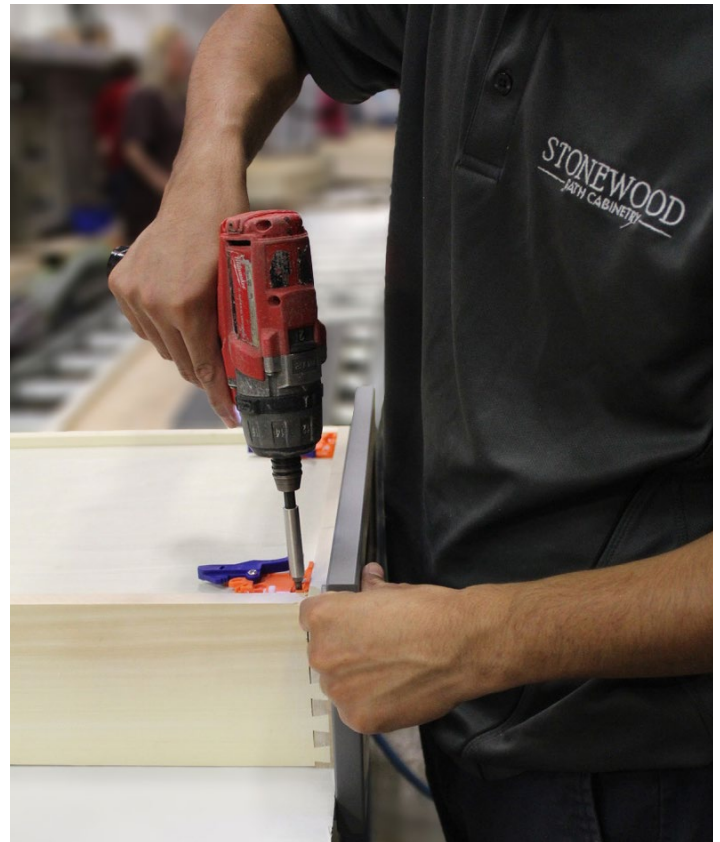
PROUD BUSINESS PARTNER OF  
**ONETREEPLANTED**



# OUR PROMISE TO YOU.

We want every step of your Stonewood journey to be joyful and fulfilling.

That's why we promise to make it as seamless and straightforward as possible to get your dream vanity with all the finishes and special touches you want. Count on us to provide exceptional service and deliver on spec and on-time.



## QUICK TURNAROUND

Once your order has been placed, expect to receive your unique vanity in 2 - 3 weeks.

## HUNDREDS OF COLOUR COMBINATIONS

Find the perfect match to suit your style!

## CANADIAN OWNED & OPERATED

Our product is assembled and inspected in Barrie, Ontario.



### ON THE COVER:

Vanity: 60" Single Sink Moss Grey (*Modern Shaker*)

Vanity top: Aurora quartz

Hardware: Square Gold pulls

Mirror: 36" Moss Grey wood mirror

# CABINETY OPTIONS

## FOR STANDARD DEPTH VANITIES

### WIRE-BRUSHED OAK PREMIUM COLLECTION



**BROWN OAK** (Bellrose)

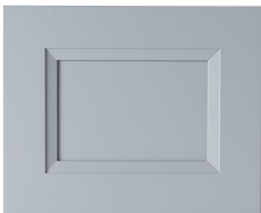


**DESERT OAK** (Bellrose)

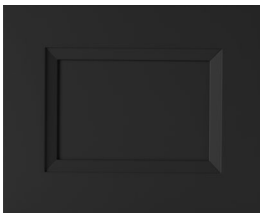


**URBAN OAK** (Bellrose)

### FIVE SHADES OF GREY PREMIUM PAINTED COLLECTION



**DAWN** (Bellrose)



**MIDNIGHT** (Bellrose)



**NAVY GREY** (Bellrose)



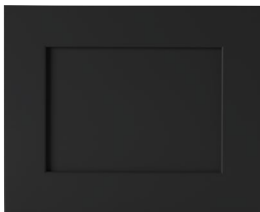
**SMOKE** (Bellrose)



**MOSS GREY** (Bellrose)



**DAWN** (Modern Shaker)



**MIDNIGHT** (Modern Shaker)



**NAVY GREY** (Modern Shaker)

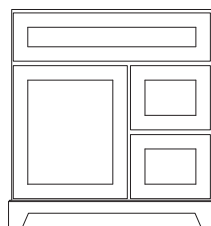


**SMOKE** (Modern Shaker)

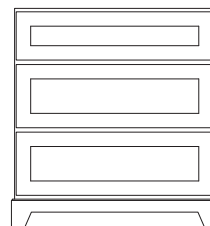


**MOSS GREY** (Modern Shaker)

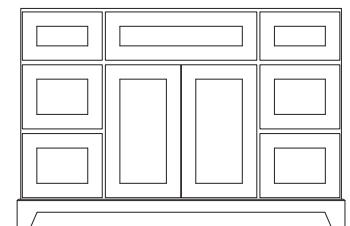
### STANDARD DEPTH VANITY STYLES



**30"/36" VANITY**  
(LEFT OR RIGHT DRAWER)



**30"/36" VANITY**  
(DRESSER STYLE)



**42"/48"/54"/60" VANITY**  
(SINGLE SINK)

**NOTE:** 30"/36" Dresser Style Vanities are available in all finishes except Chestnut (Shaker).



Made to suit your space.

Bathrooms come in all shapes and sizes. Sometimes, you need a little less depth to move around yours comfortably. Our vanities come in standard (22") and shallow (18") depth in all finishes so you can choose a size that suits you!

What's your style?

Our painted collections come with two door styles to complete your desired look!

Bellrose doors have a recessed center panel with a soft, linear profile for a traditional look, while our shaker models offer a minimalist look.

## PAINTED CLASSIC COLLECTION



**WHITE** (Bellrose)

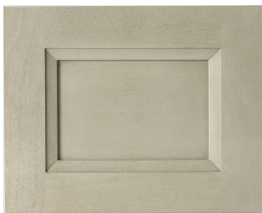


**WHITE** (Modern Shaker)

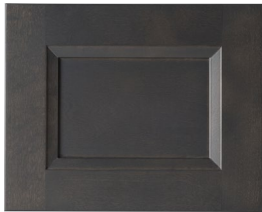
## STAINED CLASSIC COLLECTION



**CHESTNUT** (Shaker)



**DRIFTWOOD** (Bellrose)

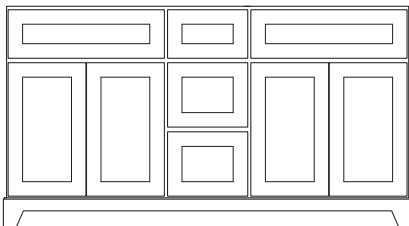


**LAKEWOOD** (Bellrose)



**SUMMIT** (Modern Shaker)

White (Bellrose) vanity with  
Oil Rubbed Bronze Bevelled handles



**60\"/>**

# CABINETY OPTIONS

## FOR SHALLOW DEPTH VANITIES

If you have limited space in your bathroom, Stonewood has your solution. Our Shallow Depth vanities provide maximum storage in minimal space. Choose from our most popular cabinetry finishes.

### WIRE-BRUSHED OAK

#### PREMIUM COLLECTION



**URBAN OAK** (Bellrose)

### FIVE SHADES OF GREY

#### PREMIUM PAINTED COLLECTION



**DAWN** (Modern Shaker)



**MOSS GREY** (Modern Shaker)



**NAVY GREY** (Modern Shaker)

### PAINTED

#### CLASSIC COLLECTION



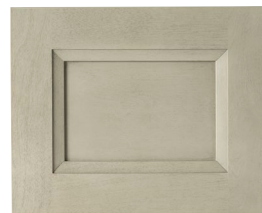
**WHITE** (Bellrose)



**WHITE** (Modern Shaker)

### STAINED

#### CLASSIC COLLECTION



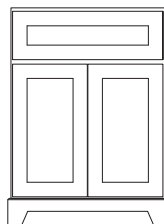
**DRIFTWOOD** (Bellrose)



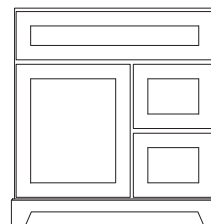
**LAKEWOOD** (Bellrose)

**NOTE:** 24" vanities are available in ALL Stonewood finishes. Refer to the Standard Depth cabinetry options on page 4-5 for details.

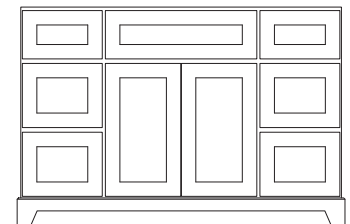
## SHALLOW DEPTH VANITY STYLES



**24" VANITY**



**30"/36" VANITY  
(RIGHT DRAWER ONLY)**



**42"/48" VANITY  
(SINGLE SINK)**

**NOTE:** Only available in A-Layout options. Refer to page 31 for details.



Navy Grey (*Modern Shaker*) vanity with Glacier quartz top, Slim Brushed Nickel handles, and Navy Grey mirror





54" Dawn (Bellrose) vanity with Glacier quartz top, and Brushed Nickel Bevelled handles



# TIMELESS STYLE, SUPERIOR QUALITY

We take pride in building vanities that are beautiful - and durable. So, they are going to stand the test of time, and stand up to anything life (and your family) throws at it.

The following premium features come standard with every single Rock Solid vanity:

- Solid hardwood face-frame, back-frame, and furniture kick
- Hardwood five-piece construction door and drawer fronts
- Hardwood dovetail drawer boxes
- Plywood interior/end gables, dust kick, and floor
- Full-extension, adjustable soft-closing hardware
- Inserted door and drawer bumpers

Chestnut (Shaker) vanity with  
Squall quartz top, and  
Chrome Bevelled handles



## STANDING SOLIDLY BEHIND OUR QUALITY

We offer a one-year limited warranty on wood products, and limited lifetime warranties on drawer slides, door hinges, porcelain sinks, and stone tops. Further details can be found at:

[www.stonewoodbath.com/warranty](http://www.stonewoodbath.com/warranty)

# WIRE-BRUSHED OAK

## PREMIUM COLLECTION

Our Wire-Brushed Oak Premium Collection is stunning! We enhance the original wood grain of oak by wire-brushing the surface to expose its natural characteristics and beauty. Multiple coats of stain and glaze further enhance the natural deep oak grain. The final product is a premium wood finish that will complement any décor.

### Collection Options:



**BROWN OAK** (Bellrose)  
Rich and refined. Brown Oak's caramel undertones bring warmth and character into any bathroom.

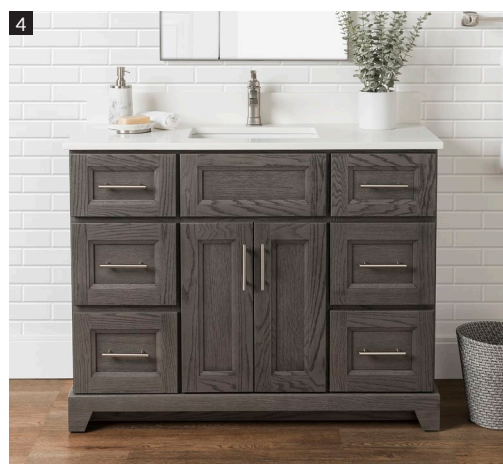
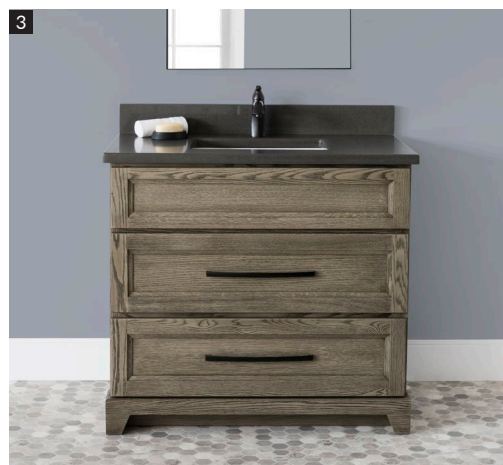
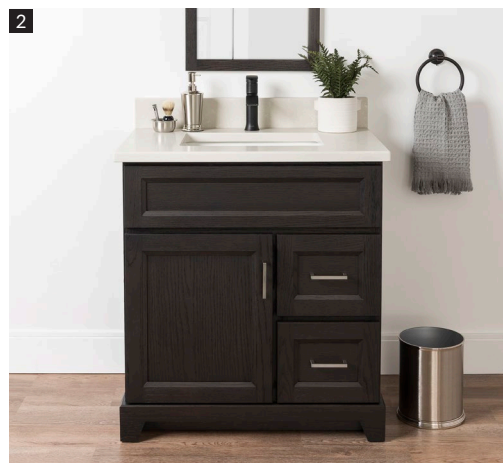


**DESERT OAK** (Bellrose)  
Light, rustic, and earthy. Desert Oak has compelling wood grains which offer a natural, organic aesthetic.



**URBAN OAK** (Bellrose)  
Dark and rich. Urban Oak provides dark wood grains with an elegant finish.

**NOTE:** Shallow Depth vanities are available in select finishes. Refer to Shallow Depth cabinetry options on page 6.







Desert Oak (Bellrose) vanity with Fantasy quartz top

1. **24" DESERT OAK (BELLROSE) VANITY** with one-piece Porcelain top with integrated sink, and Chrome Modern knobs, shown in Shallow Depth.
2. **30" BROWN OAK (BELLROSE) RIGHT DRAWER VANITY** with Seaside quartz top, and Brushed Nickel Square handles, shown in Standard Depth.
3. **36" DESERT OAK (BELLROSE) DRESSER STYLE VANITY** with Pewter quartz top, and Black Long Curved handles, shown in Standard Depth.
4. **42" URBAN OAK (BELLROSE) VANITY** with Suede quartz top, and Brushed Nickel Bar handles, shown in Shallow Depth.
5. **72" URBAN OAK (BELLROSE) DOUBLE SINK VANITY** with Dover White quartz top, and Brushed Nickel Bevelled handles, shown in Standard Depth. Displayed with two 24" Urban Oak mirrors.

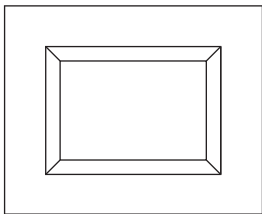
**NOTE:** We do our best to accurately represent the true colour, tone, and grain pattern of our products in print form. There may be slight colour differences between these printed images, samples in store, and from product to product.

# FIVE SHADES OF GREY

## PREMIUM PAINTED COLLECTION

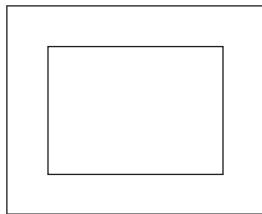
Set your bathroom apart with one of our premium painted grey finishes! These 5 trendsetting colours are sure to add the WOW factor to any sized bathroom.

### Available five-piece door styles:



#### BELLROSE

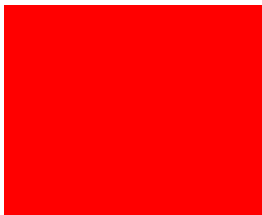
Recessed centre panel with a soft, linear profile.



#### MODERN SHAKER

Shaker-style with a slender frame.

### Colour Options:



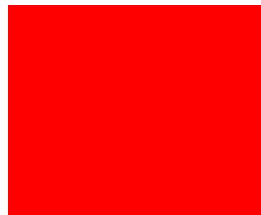
#### DAWN

Similar to Beauti-Tone Metropolis Mood D35-4-0526-0 and Benjamin Moore Pilgrim Haze 2132-50.



#### MIDNIGHT

Similar to Beauti-Tone Little Black Number DR60-3 and Benjamin Moore Black Satin 2131-10.



#### MOSS GREY

Similar to Beauti-Tone Stairway to Heaven C4-2-0479-4 and Benjamin Moore Kitty Gray 1589.



#### NAVY GREY

Similar to Beauti-Tone Rooftop at Midnight F034-3 and Benjamin Moore Hale Navy HC-154



#### SMOKE

Similar to Beauti-Tone Roller Skates ST016 and Benjamin Moore Metropolitan AF-690

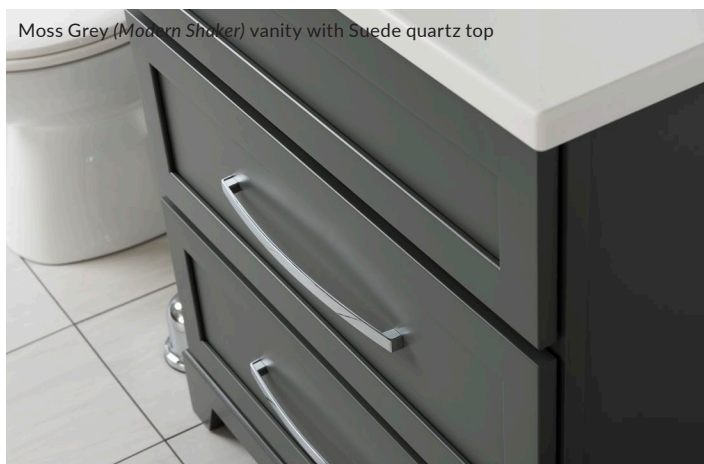
**NOTE:** Shallow Depth vanities are available in select finishes. Refer to Shallow Depth cabinetry options on page 6.







Moss Grey (Modern Shaker) vanity with Suede quartz top



1. **24" SMOKE (BELLROSE) VANITY** with one-piece Porcelain top with integrated sink, and Brushed Nickel Bevelled handles, shown in Shallow Depth.
2. **36" NAVY GREY (MODERN SHAKER) RIGHT DRAWER VANITY** with Glacier quartz top, and Brushed Nickel Modern knobs, shown in Shallow Depth.
3. **30" MOSS GREY (MODERN SHAKER) DRESSER STYLE VANITY** with Suede quartz top, and Chrome Long Curved handles, shown in Standard Depth.
4. **48" MIDNIGHT (BELLROSE) VANITY** with Glacier quartz top, and Chrome Prestige knobs, shown in Standard Depth.
5. **72" DAWN (BELLROSE) DOUBLE SINK VANITY** with White Sand quartz top, and Chrome Prestige knobs, shown in Standard Depth. Displayed with 24" Brushed Nickel metal mirrors.

**NOTE:** We do our best to accurately represent the true colour, tone, and grain pattern of our products in print form. There may be slight colour differences between these printed images, samples in store, and from product to product.

# PAINTED CLASSIC COLLECTION

Our Painted Classic Collection offers two door styles painted in a clean, crisp white. Our vanities have a smooth uniform finish; the result of applying multiple coats of paint and sanding in between each coat. This technique results in a beautiful, satin-like appearance; a standout piece in any bathroom.

## Collection Options:



**WHITE** (*Bellrose*)

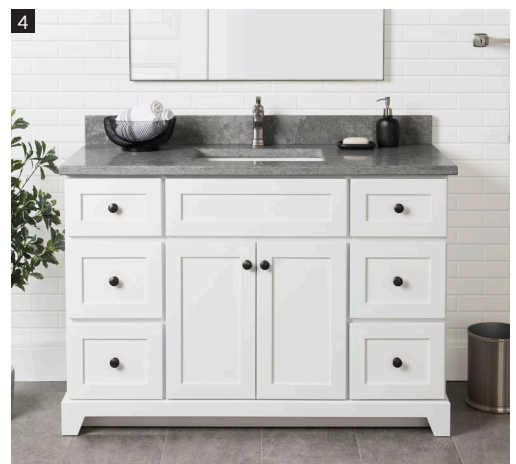


**WHITE** (*Modern Shaker*)

All Painted Classic Collection vanities come in a clean, crisp white; Similar to *Beauti-Tone Here Comes The Bride WB001-0* and *Benjamin Moore Chantilly Lace OC-65*.



White (*Modern Shaker*) vanity with Fantasy quartz top







White (Modern Shaker) vanity with Brushed Nickel Elegance handles

1. **24" WHITE (BELLROSE) VANITY** with Frosty Grey quartz top, and Brushed Nickel Bar handles, shown in Shallow Depth.
2. **30" WHITE (BELLROSE) RIGHT DRAWER VANITY** with Carrera quartz top, and Chrome Bevelled handles, shown in Shallow Depth.
3. **36" WHITE (MODERN SHAKER) DRESSER STYLE VANITY** with Stratus quartz top, and Brushed Nickel Elegance handles, shown in Standard Depth.
4. **48" WHITE (MODERN SHAKER) VANITY** with Moonscape quartz top, and Oil Rubbed Bronze Modern knobs, shown in Standard Depth.
5. **72" WHITE (MODERN SHAKER) DOUBLE SINK VANITY** with Dover White quartz top, and Black Prestige knobs, shown in Standard Depth. Displayed with two 24" Black metal mirrors.

**NOTE:** We do our best to accurately represent the true colour, tone, and grain pattern of our products in print form. There may be slight colour differences between these printed images, samples in store, and from product to product.

# STAINED

## CLASSIC COLLECTION

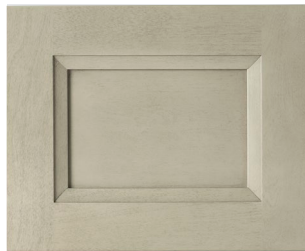
Our Stained Classic Collection features an assortment of popular wood stains and glazes, offered in a variety of door styles. Multiple coats of stain and glaze are applied by hand to achieve a deep, rich finish.

### Collection Options:



#### **CHESTNUT** (*Shaker*)\*

Chestnut brings an elegant, traditional look to your bathroom space. Seen here in Shaker door style, it has a slightly modern feel.



#### **DRIFTWOOD** (*Bellrose*)

Light and neutral. Driftwood is the perfect canvas to build upon, allowing you to pair it with almost any colour.



#### **LAKEWOOD** (*Bellrose*)

Modern, charming, and satiny. Lakewood offers hints of black, green, and dark grey. A chic and sophisticated centrepiece to your bathroom.

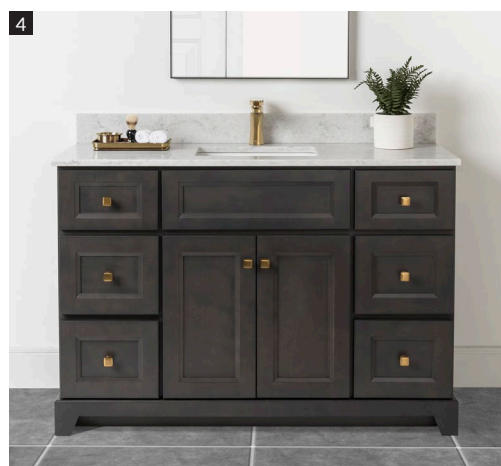
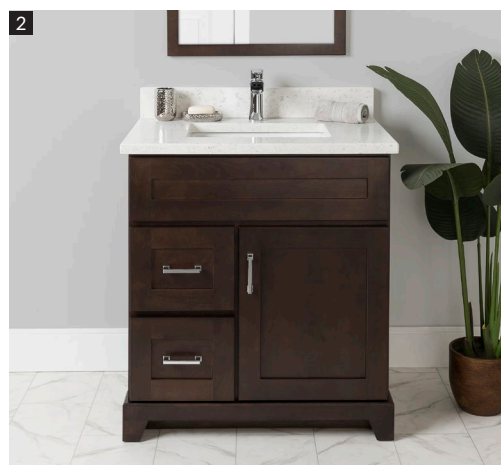
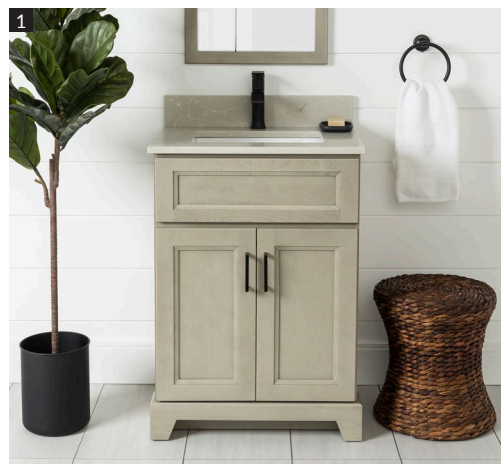


#### **SUMMIT** (*Modern Shaker*)

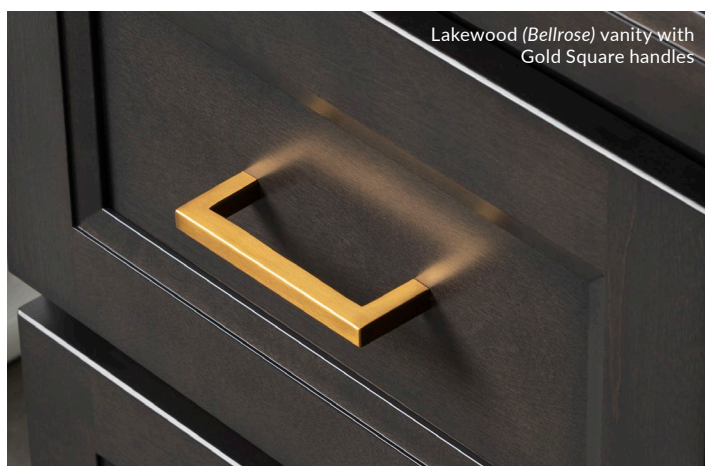
Uniquely blended with earthy brown and grey undertones that will bring a natural warmth to any bathroom.

**NOTE:** Shallow Depth vanities are available in select finishes. Refer to Shallow Depth cabinetry options on page 6.

\*30"/36" Dresser Style vanities are available in all finishes except Chestnut (*Shaker*).







Lakewood (Bellrose) vanity with Gold Square handles

1. **24" DRIFTWOOD (BELLROSE) VANITY** with Luna quartz top, and Black Square handles, shown in Shallow Depth.
2. **30" CHESTNUT (SHAKER) LEFT DRAWER VANITY** with Squall quartz top, and Chrome Bevelled handles, shown in Standard Depth.
3. **36" SUMMIT (MODERN SHAKER) DRESSER STYLE VANITY** with Tempest quartz top, and Black Elegance handles, shown in Standard Depth.
4. **48" LAKEWOOD (BELLROSE) VANITY** with Frosty Grey quartz top, and Gold Prestige knobs, shown in Shallow Depth.
5. **72" SUMMIT (MODERN SHAKER) DOUBLE SINK VANITY** with Milano quartz top, and Chrome Modern knobs, shown in Standard Depth. Displayed with two 18" Summit mirrors.

**NOTE:** We do our best to accurately represent the true colour, tone, and grain pattern of our products in print form. There may be slight colour differences between these printed images, samples in store, and from product to product.



# LINEN TOWER

## INTEGRATION

Linen towers have a matching, finished interior. The standard option comes with open upper shelves or a door with left or right hinges that can be added at no additional charge.

### Custom Integration:

No matter what your preference, our linen tower will complete the look of your bathroom. A linen tower can be installed in three different ways:

**(1) Free standing** – Linen towers are finished on all three sides making it a beautiful, stand-alone piece.

**(2) Tight against a wall** – The crown molding should be cut to have the linen tower crown and kick sit flush against the wall. The supplied filler strips then bridge the gap between the cabinet and wall to complete the installation.  
**NOTE:** This cut should be performed on-site by a skilled trades professional.

**(3) Integrated with your vanity (Standard Depth vanities only)** – We factory cut your vanity top and side splash to ensure a snug fit between the linen tower and vanity cabinet. The linen tower decorative kick is also designed to integrate seamlessly behind the vanity decorative kick. Finally, a ¾" colour-matched filler strip closes the gap between the cabinets to complete the installation.

When purchasing a linen tower, please consult with a sales associate and choose from the linen tower layout options. We will prepare the linen tower(s) according to your layout, facilitating the installation.

**NOTE:** If integrating linen towers with a 60" double sink vanity, we recommend using two 18" mirrors. The width of the crown molding on the linen towers will prevent 24" mirrors from being centred over the sinks.



▲ Decorative kick integration



▲ Side splash is precut for Linen Tower integration





48" Smoke (Bellrose) vanity with Suede quartz top, Brushed Nickel Bevelled handles, linen tower, 36" round Brushed Nickel metal mirror, and bath storage cabinet



# HARDWARE

Stonewood Bath Cabinetry offers a wide range of handles and knobs to accentuate your bathroom furniture, and are available for both Standard and Shallow Depth vanities. Choose “no hardware” on the order form to customize the look even further with your own hardware.

## BAR (96 mm)



BLACK



BRUSHED NICKEL



CHROME



OIL RUBBED BRONZE

## BEVELLED (96 mm)



BLACK



BRUSHED NICKEL



CHROME



OIL RUBBED BRONZE

## CURVED (96 mm)



BLACK



BRUSHED NICKEL



CHROME



OIL RUBBED BRONZE

## SLIM (96 mm)



BLACK



BRUSHED NICKEL



CHROME



OIL RUBBED BRONZE

## SQUARE (96 mm)



BLACK



BRUSHED NICKEL



CHROME



GOLD

LONG CURVED HANDLES  
FOR DRESSER STYLE  
VANITIES (320 mm)



ELEGANCE HANDLES  
FOR DRESSER STYLE  
VANITIES (320 mm)



MODERN



BLACK



BRUSHED NICKEL



CHROME



OIL RUBBED BRONZE

PRESTIGE



BLACK



BRUSHED NICKEL



CHROME



GOLD

NEW!



HARDWARE CAN  
TRANSFORM THE LOOK  
OF YOUR VANITY!

CHOOSE FROM HANDLES, KNOBS OR  
A MIX OF BOTH.

Left:  
36" Navy Grey (*Modern Shaker*) Right Drawer vanity with  
Glacier quartz top, and Brushed Nickel Modern knobs and  
Slim handles, shown in Shallow Depth.



# QUARTZ TOPS

## CREATE THE LOOK YOU LOVE!

Stonewood Bath Cabinetry strives to give our customers the luxury of choice. This continues with our quartz vanity tops.

### STANDARD DEPTH TOPS

Standard Depth quartz tops are 1½" thick and offered in 16 colour options. Choose from two sink styles and colours, and single, 4", or 8" on centre faucet hole drill patterns.

### SHALLOW DEPTH TOPS

Shallow Depth quartz tops are ¾" thick and offered in 6 colour options. All vanity tops come standard with a Classic White sink, and a choice of single, 4", or 8" on centre faucet hole drill patterns.

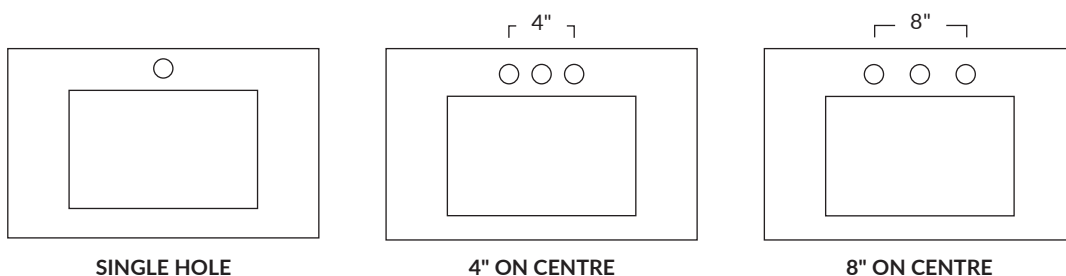
All vanity tops include undermount sinks that are factory installed using industrial silicon. They also come standard with a matching 4" high backsplash and required side splashes based on the selected layout.



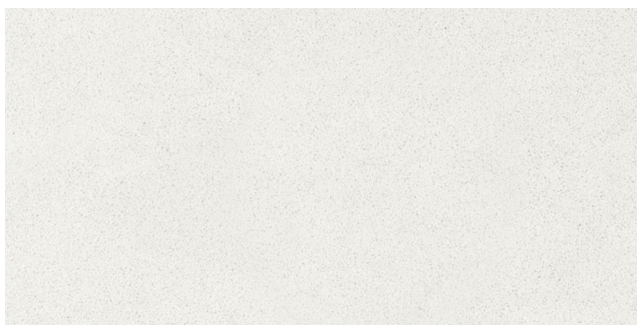
## TECHNICAL DETAILS

Our non-porous, 92% natural quartz stone is engineered for consistent colour. It is heat, scratch, and stain resistant. No sealing is required, making it maintenance free. Quartz vanity tops are available in standard widths to pair with our vanities. For an additional charge, custom cuts are available from the standard widths. Please consult with an in-store sales representative for assistance with the custom-cut top measurements.

## FAUCET HOLE DRILL PATTERN OPTIONS



**NOTE:** Faucet holes are 1½" diameter.



#### DOVER WHITE

Powder white that brings softness to any vanity



#### CARRERA

Crisp white top with marble inspired veining



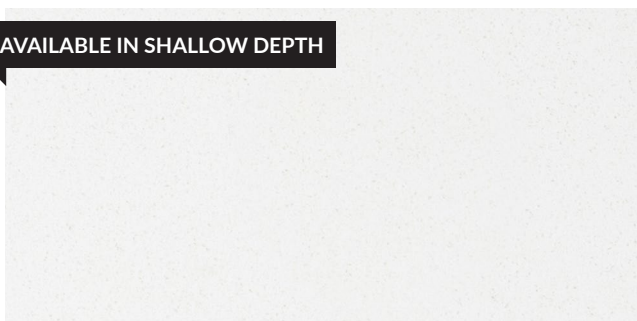
#### WHITE SAND

White top with light grey crystal flecks



#### GLACIER

White quartz with bold, dramatic veining pattern throughout



#### SUEDE

Bright and clean top that pairs perfectly with any base



#### MILANO

White quartz with bold grey banding, and a hint of gold veining



#### SQUAL

Powder white with grey speckle pattern

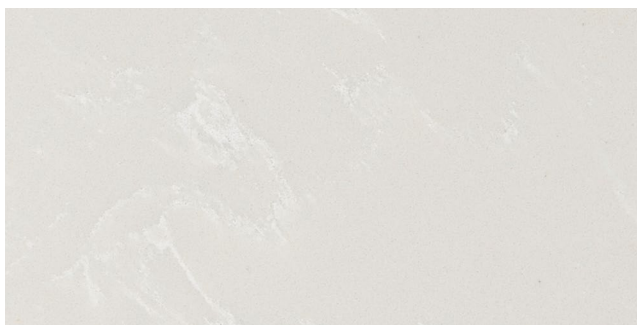


#### AURORA

Cloudy white with various shades of grey veins and tortoise shell patterning

**NOTE:** We do our best to accurately represent the true colour, tone, and grain pattern of our products in print form. There may be slight colour differences between these printed images, samples in store, and from product to product.





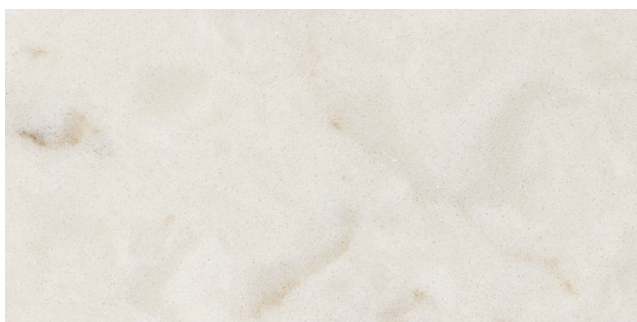
#### SEASIDE

Warm grey top with soft white veining



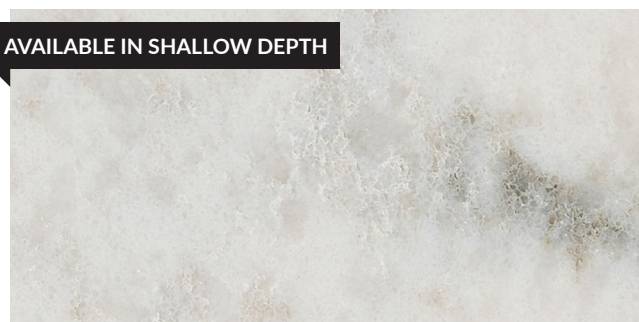
#### LUNA

Warm grey with white and caramel veining complemented by light quartz sparkles on surface



#### FANTASY

Warm white stone with cool grey and light brown tones



#### FROSTY GREY

Cool grey with frosted veining pattern of grey, white, and light brown tones



#### MOONSCAPE

Light and dark grey hues in an industrial textured pattern



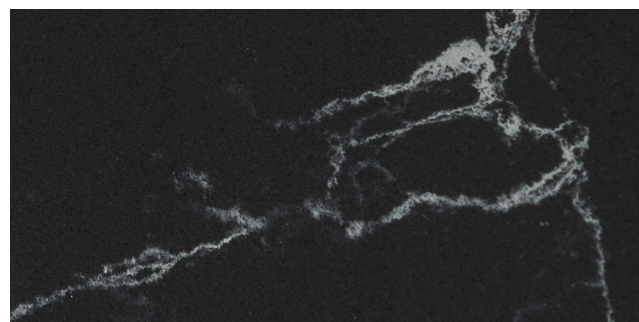
#### STRATUS

Medium grey with white and dark grey patterning and matte texture



#### PEWTER

Dark grey with speckled surface pattern



#### TEMPEST

Black with striking white veining

**NOTE:** We do our best to accurately represent the true colour, tone, and grain pattern of our products in print form. There may be slight colour differences between these printed images, samples in store, and from product to product.

# UNDERMOUNT SINKS



## CLASSIC

Distinguished by a deep elongated basin, the Classic sink is a traditional style. The wide-shaped, sweeping sides rest under the counter. Available in White.



## MANHATTAN

With unique vertical sides, a low sloping bottom, and a centre drain location, the Manhattan sink brings a more modern look to any vanity combination. Available in White.

**NOTE:** *Shallow Depth comes with White Classic sink only.*

## 24" PORCELAIN TOP

This white porcelain top comes with an integrated rectangular sink and a sleek, modern profile. It features an overflow drain and non-porous glaze that prevents discolouration and fading. The wide, flat border around the basin provides practical storage.

Only available with single hole faucet drill pattern.

Dimensions: 24 $\frac{1}{4}$ " x 18 $\frac{1}{2}$ "



24" White (Bellrose) vanity with one-piece Porcelain top

# ACCESSORIES

Complete the look of your new bathroom with a matching mirror, bath storage cabinet, or medicine cabinet. Accessories are available in all cabinetry finishes.

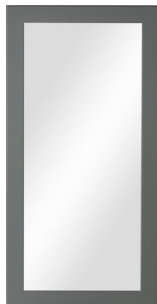
**NOTE:** Mirror colour matching applies to wood frames only.

## BATH STORAGE CABINETS

Add a matching bath storage cabinet over your toilet for even more storage. Includes two adjustable interior wooden shelves.



24½" x 36"



18" x 36"



24" x 36"

## MEDICINE CABINETS

Medicine Cabinets come right or left hinged with three adjustable glass shelves. They are designed to be mounted flush or recessed. Comes in two sizes, 18" and 24".

## DRAWER INSERTS

Upgrade your bathroom vanity with Drawer Organizers and Sliding Trays (*sold separately*) designed to bring order and style to your vanity. Crafted from high-quality birch plywood, these organizers and trays reduce clutter and make everything easy to find. Compartments have removable dividers to customize your space.

Not Available for 30" & 36" Dresser style vanities or Linen Towers.



**NEW!**





Brushed Nickel metal mirror



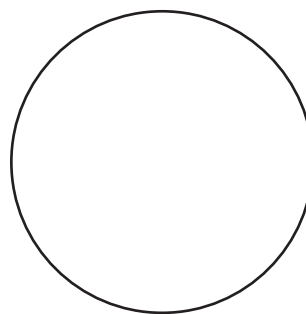
## METAL MIRRORS

Modernize the look of your bathroom with one of our metal framed mirrors! Banded by a 1¼" stainless steel frame, this sleek design is available in either a Brushed Nickel or painted Black finish. Two pre-mounted French cleats on the back of the mirror are provided for installation.

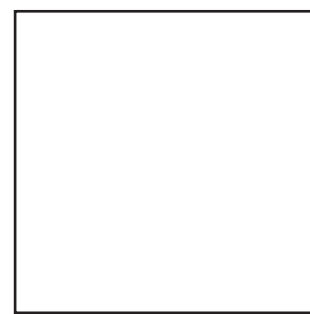
### COLOUR OPTIONS



24" x 40"



36" dia.



36" x 36"

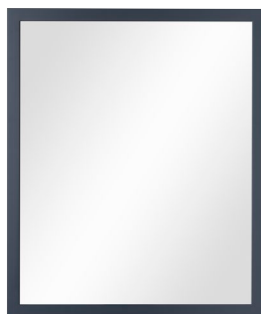
**NOTE:** Due to the weight of these mirrors we *HIGHLY* recommend a skilled trades professional perform the final install.



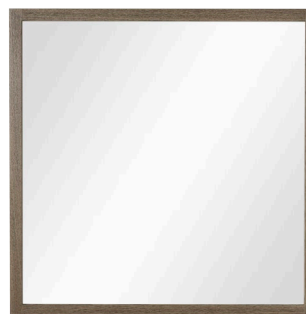
18" x 36"



24" x 36"



30" x 36"



36" x 36"

## WOOD MIRRORS

Complement your new vanity with a matching, wood-framed mirror. All mirrors are 36" in height and available in all cabinetry finishes. Available mirror widths: 18", 24", 30", 36"

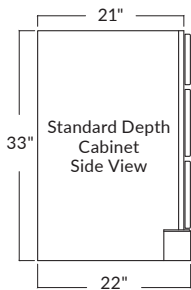
# DIMENSIONS

The following measurements are provided to help with the ordering process.

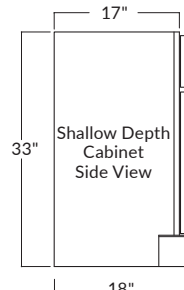
Please allow for  $\frac{1}{8}$ " (+/-) variance.

## VANITIES

**STANDARD DEPTH  
SIDE VIEW\***

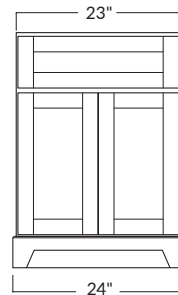


**SHALLOW DEPTH  
SIDE VIEW\***

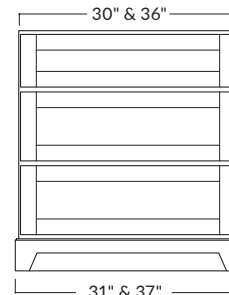


\*Standard Depth is available in all vanity sizes and configurations except 24". Shallow Depth is available in 24", 30" & 36" Right Drawer, 42" & 48" vanities.

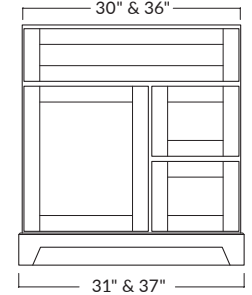
**24" SINGLE SINK  
VANITY**



**30" OR 36" SINGLE SINK  
DRESSER STYLE VANITY**

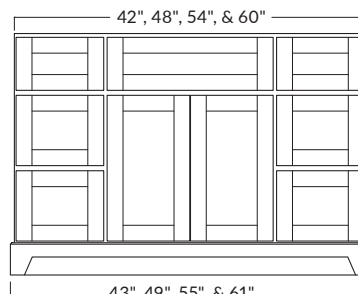


**30" OR 36" SINGLE SINK  
(Drawers available on left or right)**

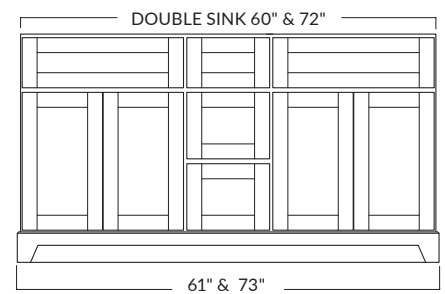


Upper drawer depth is 14" with 6" (w) x 9 1/4" (d) notch in centre to accommodate plumbing.

**42", 48", 54", OR 60" SINGLE SINK**

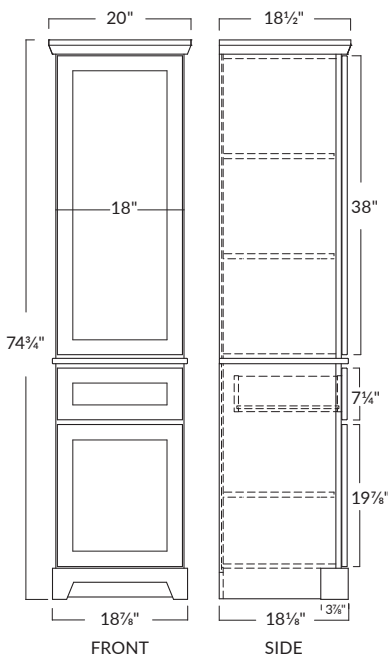


**60" OR 72" DOUBLE SINK**



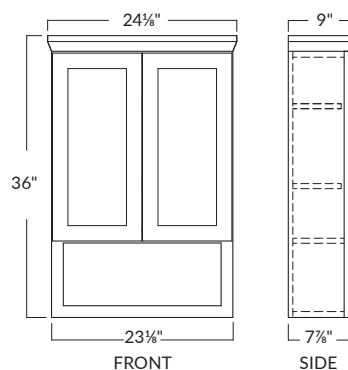
## LINEN TOWER

Choose open shelves or an upper door with right or left hinge.

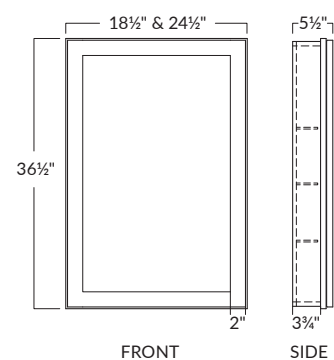


## ACCESSORIES

**BATH STORAGE CABINET**



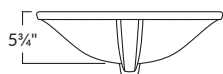
**18" OR 24" MEDICINE CABINET  
(FLUSHED OR RECESSED)**



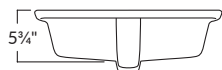


## UNDERMOUNT SINKS

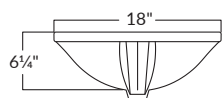
### STANDARD DEPTH CLASSIC SINK PROFILE



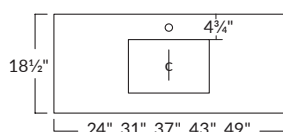
### STANDARD DEPTH MANHATTAN SINK PROFILE



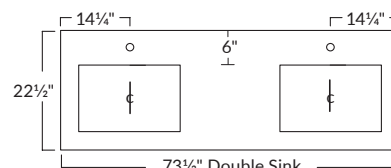
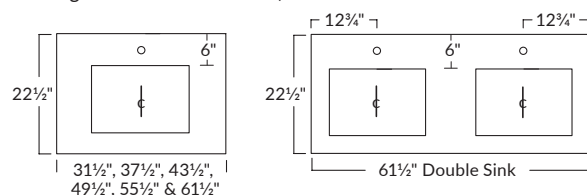
### SHALLOW DEPTH CLASSIC SINK PROFILE



### SINK POSITIONING WITH SHALLOW DEPTH STONE TOPS (NOTE: The stone top opening is 15 1/8" x 10")

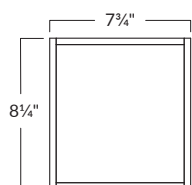


### SINK POSITIONING WITH STANDARD DEPTH STONE TOPS (NOTE: The stone top opening for both the Classic and Manhattan Rectangular sink is 17" x 11 5/8")

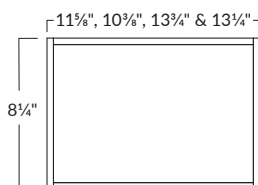


## ACCESSORIES

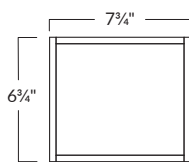
### SLIDING TRAYS



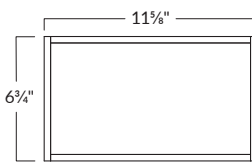
FOR 30" L/R, 42", 48" & 60" D  
STANDARD DEPTH VANITIES



FOR 36" L/R, 54", 60" S & 72"  
STANDARD DEPTH VANITIES

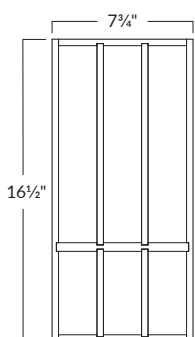


FOR 30" L/R, 42" & 48"  
SHALLOW DEPTH VANITIES

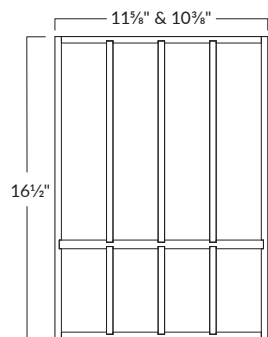


FOR 36" L/R  
SHALLOW DEPTH VANITIES

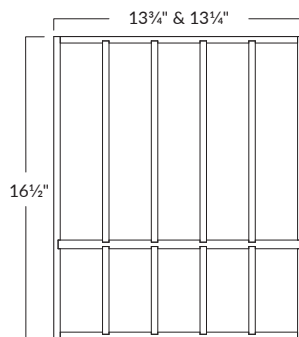
### DRAWER ORGANIZERS



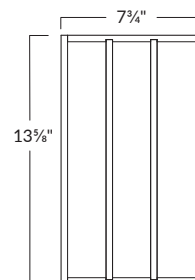
FOR 30" L/R, 42", 48" & 60" D  
STANDARD DEPTH VANITIES



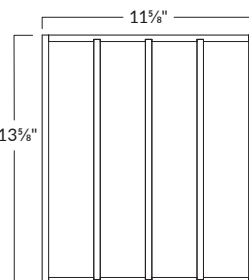
FOR 36" L/R & 54"  
STANDARD DEPTH VANITIES



FOR 60" S & 72"  
STANDARD DEPTH VANITIES

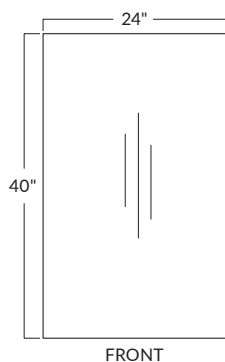


FOR 30" L/R, 42" & 48"  
SHALLOW DEPTH VANITIES

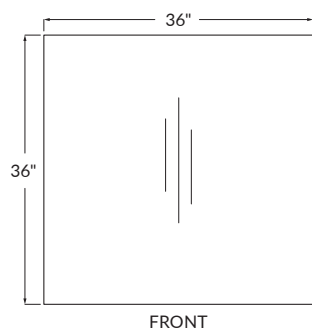


FOR 36" L/R  
SHALLOW DEPTH VANITIES

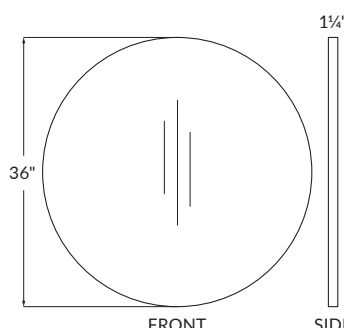
### METAL MIRRORS



FRONT



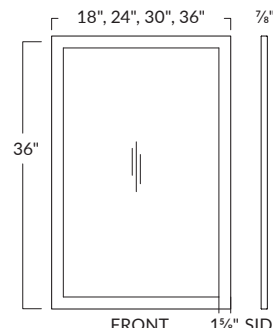
FRONT



FRONT

SIDE

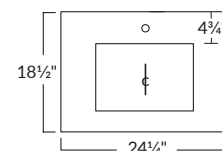
### WOOD MIRRORS



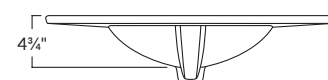
FRONT

1 1/8" SIDE

## 24" PORCELAIN TOP



### BASIN PROFILE



# PROJECT PLANNING & INSTALLATION TIPS

We recommend having a **skilled trades professional** install your new bathroom furniture. Please refer to the planning tips below prior to installation.

## INSTALLATION TIPS

As you design your new bathroom, the placement of your bathroom furniture and accessories are key for everyday functionality.

Here is a reference guide to help you with your placement measurements.

48" Smoke (Bellrose) vanity with Suede quartz top, Brushed Nickel Bevelled handles, 36" round Brushed Nickel mirror, Linen Tower, and bath storage cabinet



## PLANNING STEPS

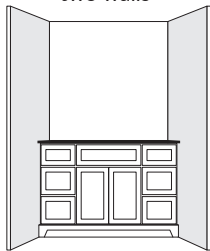
1. Accurately measure your bathroom. Make note of plumbing locations, electrical outlets, light fixtures, and available wall depth at doorways.
2. Draw your bathroom to scale using provided dimensions (pg. 28-29) and layout options (pg. 31). NOTE: The Standard Depth stone tops are 1½" wider than the width of the cabinet (¾" per side overhang). The Shallow Depth stone tops are 1" wider than the width of the cabinets (½" per side overhang).
3. Select your cabinet finish, hardware, stone vanity top, faucet pattern, sink, and accessories.
4. Colour-matched filler strips are included with the purchase of your vanity based on the layout option selected. 1" filler strips are offered for Standard Depth vanities and ¾" filler strips are offered for Shallow Depth vanities. 4" colour-matched filler strips are available at an additional charge.
5. Your vanity top comes complete with a matching 4" back-splash. Side splashes are included based on the layout option chosen. For an additional charge, vanity tops can be custom cut to fit between two walls. Please consult with a sales associate to help you fill out a custom cut vanity top order form.
6. Review and place your order with an in-store sales associate at a Stonewood retail location near you. Expect delivery within two - three weeks.



# LAYOUT OPTIONS

1

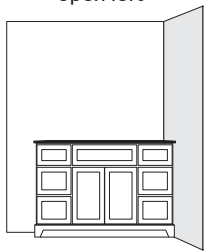
Between  
two walls



A-1

2

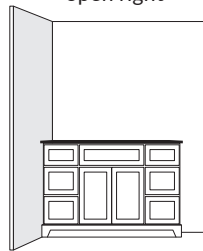
Wall on right,  
open left



A-2

3

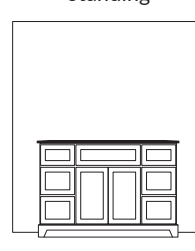
Wall on left,  
open right



A-3

4

Free  
standing



A-4

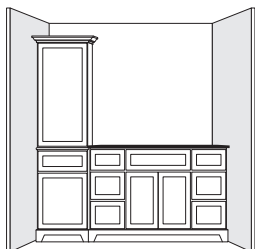
A

Vanity only

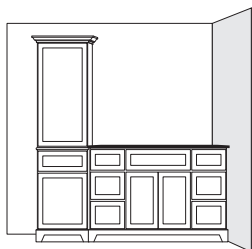
**NOTE:** Shallow  
Depth vanities are  
only available in  
A-Layout options.

B

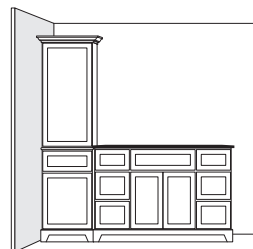
Vanity with  
Linen Tower  
(left)



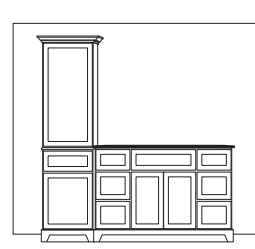
B-1



B-2



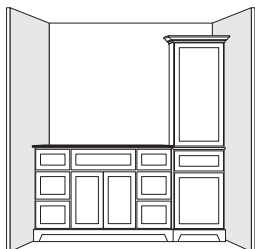
B-3



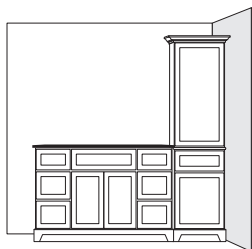
B-4

C

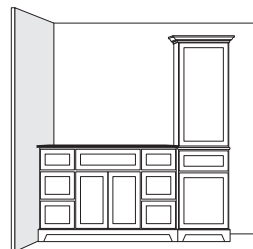
Vanity with  
Linen Tower  
(right)



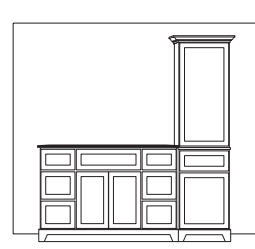
C-1



C-2



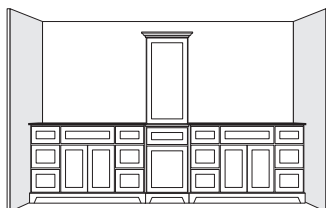
C-3



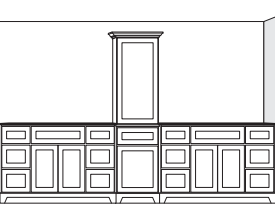
C-4

D

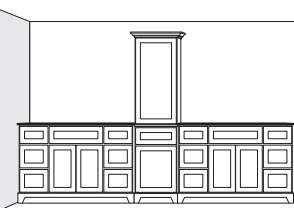
Double Vanity  
with  
Linen Tower  
(centred)



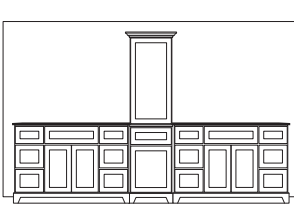
D-1



D-2



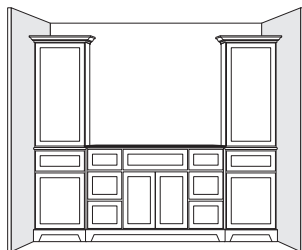
D-3



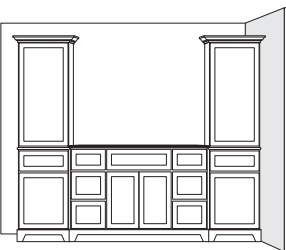
D-4

E

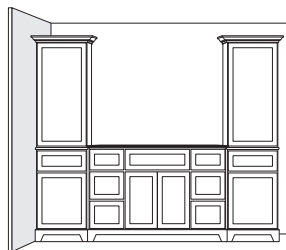
Vanity with  
Linen Towers



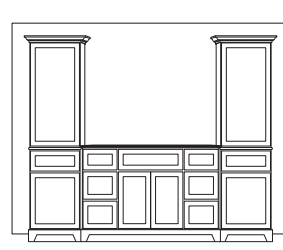
E-1



E-2



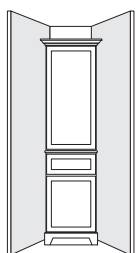
E-3



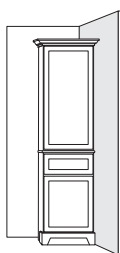
E-4

F

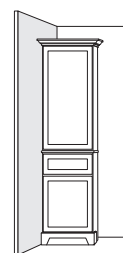
Linen Tower  
Only



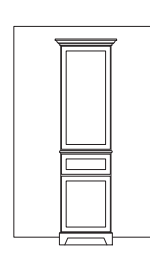
F-1



F-2



F-3

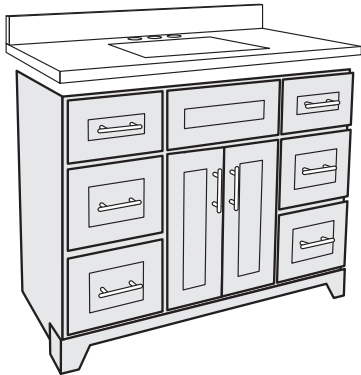


F-4

# EASY ORDERING

Follow the steps below to order your new vanity exactly the way you want it.

## 1. CHOOSE YOUR VANITY SIZE AND FINISH



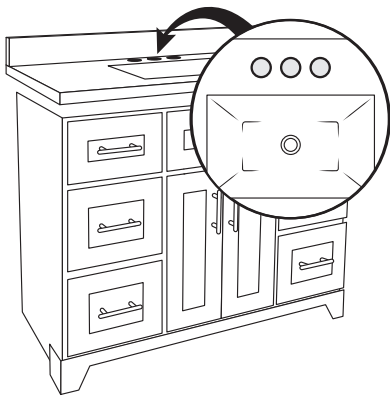
## 2. CHOOSE YOUR HARDWARE



## 3. CHOOSE YOUR STONE VANITY TOP



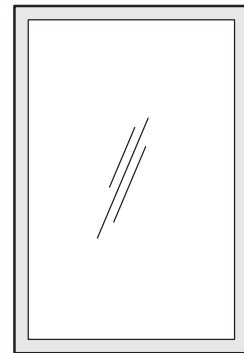
## 4. CHOOSE YOUR FAUCET DRILL PATTERN



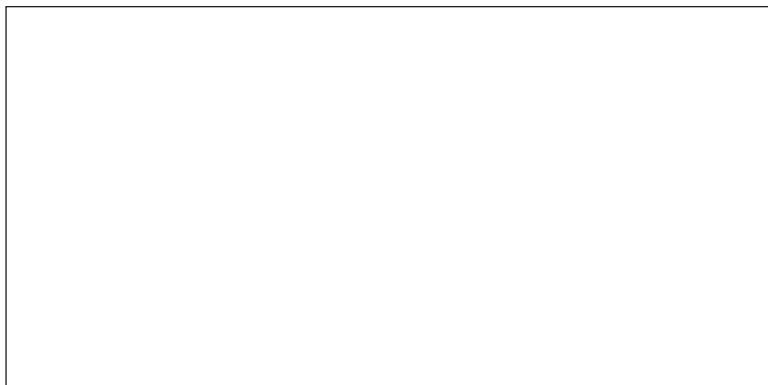
## 5. CHOOSE YOUR SINK



## 6. CHOOSE YOUR ACCESSORIES



## 7. SPEAK TO YOUR SALES ASSOCIATE TO FINALIZE YOUR ORDER. EXPECT DELIVERY IN TWO - THREE WEEKS.



**STONEWOOD**  
— BATH CABINETY —



[stonewoodbath.com](https://stonewoodbath.com)



Printed on 30% recycled material.  
Please recycle.